



District 2 Code Analysis - 01/05/2023

Data extracted for Code complaint cases opened between October 1st, 2020 - September 30st, 2021

All Complaint Cases

Reported Complaint Type	Total	Commercial	Neighborhood	Multifamily
Land Use	685	134	479	72
Property Abatement	1,774	263	1,390	121
Structure Condition	571	80	215	276
Work Without Permit	71	11	55	5
SWS Chp 15	2	-	2	-
Total	3,103	488	2,141	474
Total Percent of Citywide Complaints	9.1%	8.6%	10.2%	6.4%

Repeat Offender, Short Term Rental, and Rooming and Boarding Home Complaint Cases

**Filtering complaint cases by complaints occurring at Repeat Offender Properties (ROP), Short Term Rentals (STR), or Rooming and Boarding Homes (RBH). Austin Code categorizes them as Operating Licenses types.*

Case Code	Total	Commercial	Neighborhood	Multifamily
Repeat Offender Properties	271	50	2	219
Short Term Rentals	40	4	35	1
Rooming and Boarding Homes	3	-	3	-
Total	314	54	40	220
Total Percent of Citywide Complaints	0.9%	0.9%	0.2%	3.0%

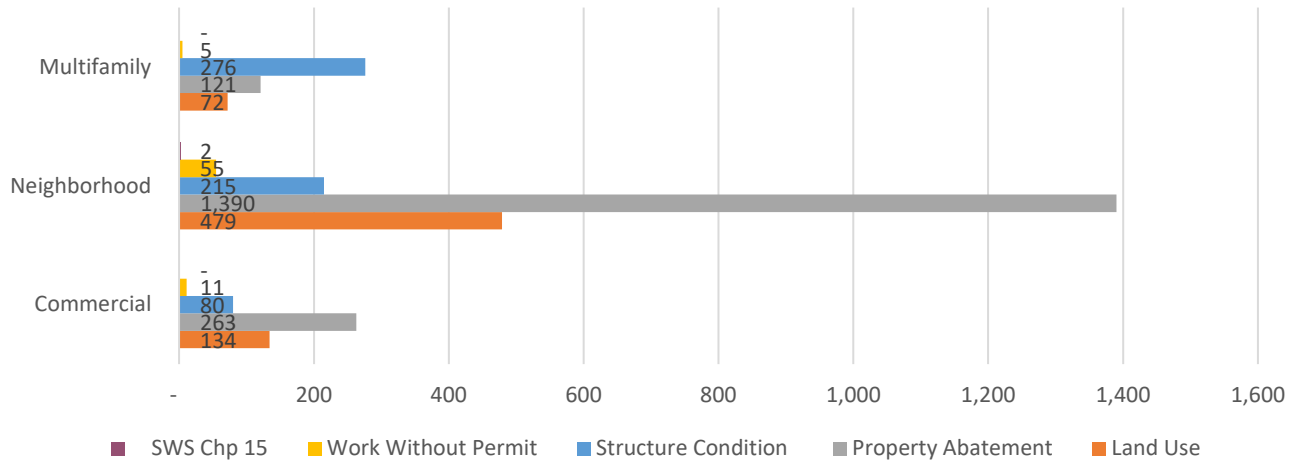
Reported Complaint Type	Total	ROP	STR	RBH
Land Use	685	14	40	2
Property Abatement	1,774	15	-	-
Structure Condition	571	242	-	1
Work Without Permit	71	-	-	-
SWS Chp 15	2	-	-	-
Total	3,103	271	40	3
Total Percent of Citywide Complaints	9.1%	8.2%	2.5%	5.7%

Council District Matrix - All Complaint Cases

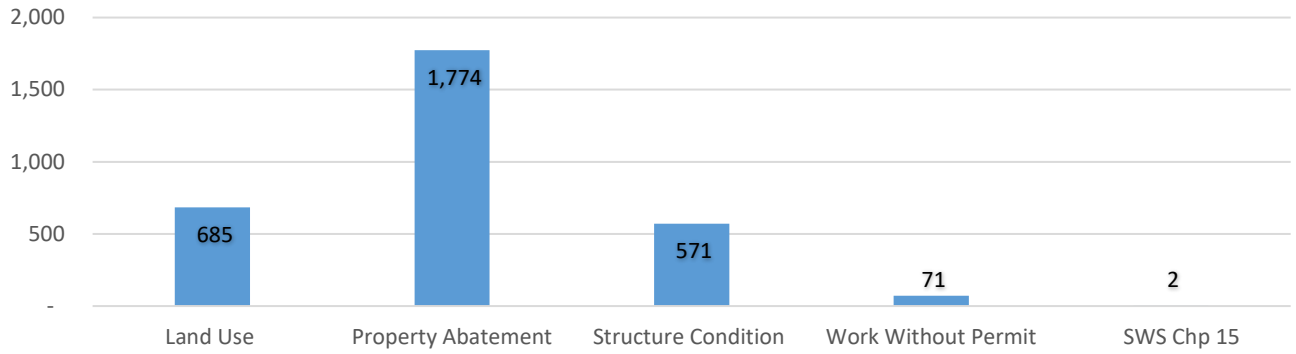
This matrix shows your Council District's percentage of total complaint cases in comparison with others.

Council District	% Total	% Commercial	% Neighborhood	% Multifamily
District 1	15.0%	9.7%	16.2%	15.4%
District 2	9.1%	8.6%	10.2%	6.4%
District 3	13.5%	17.7%	11.7%	15.3%
District 4	17.9%	19.3%	15.1%	25.0%
District 5	8.9%	6.2%	11.4%	4.0%
District 6	3.5%	2.3%	4.6%	1.2%
District 7	8.2%	9.0%	8.5%	6.9%
District 8	4.1%	2.5%	5.4%	1.7%
District 9	13.5%	21.1%	9.4%	19.1%
District 10	6.3%	3.5%	7.5%	4.9%

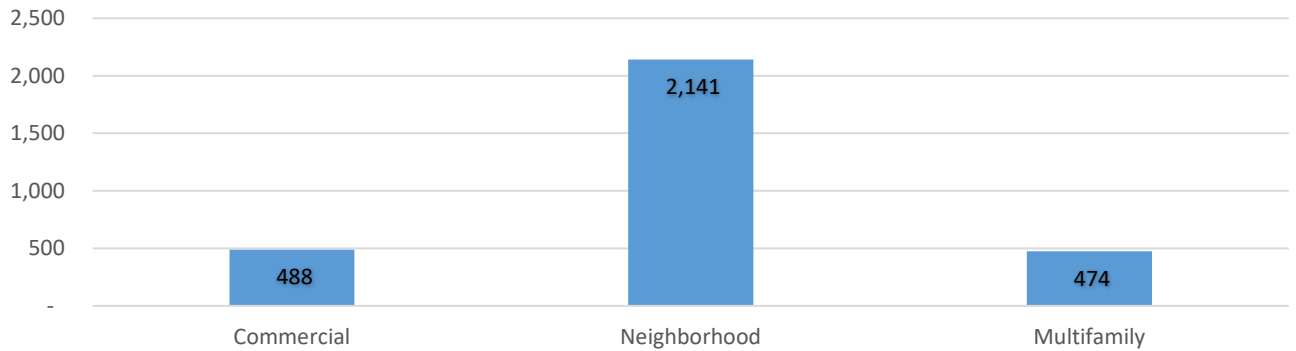
Complaint Case Types by Zoning Designation



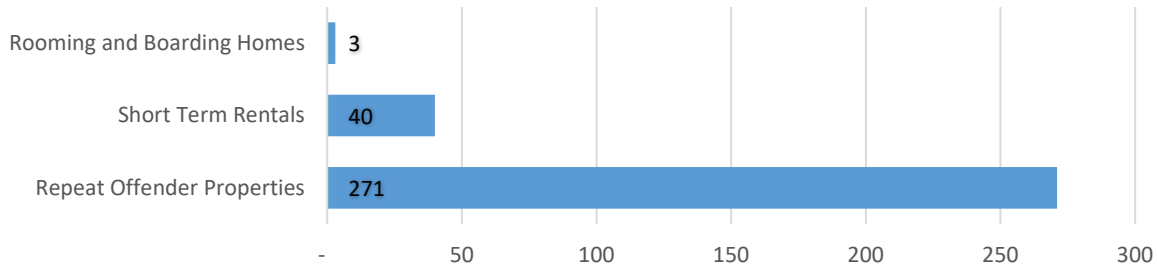
Complaint Cases by Complaint Type



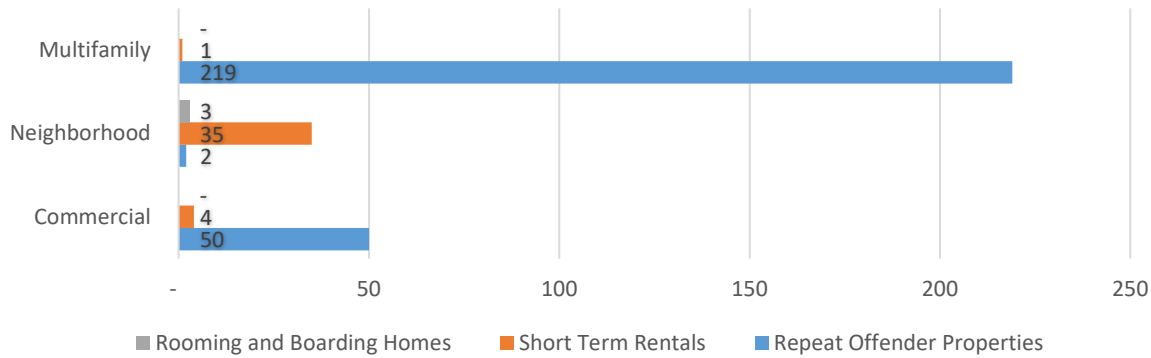
Complaint Cases by Zoning Designation



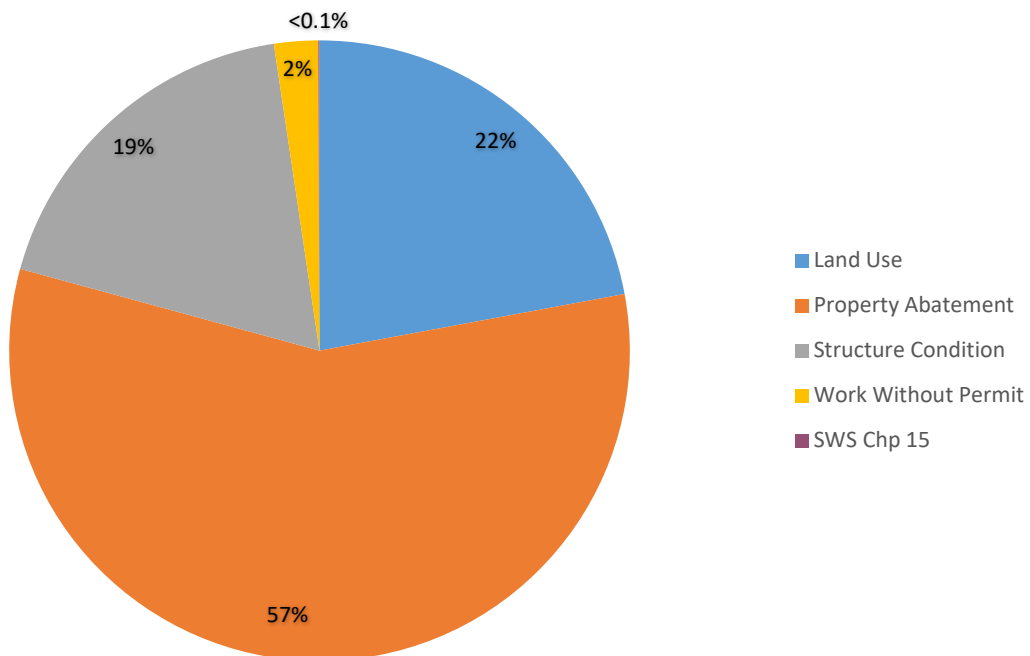
Complaint Cases by Operating License Types



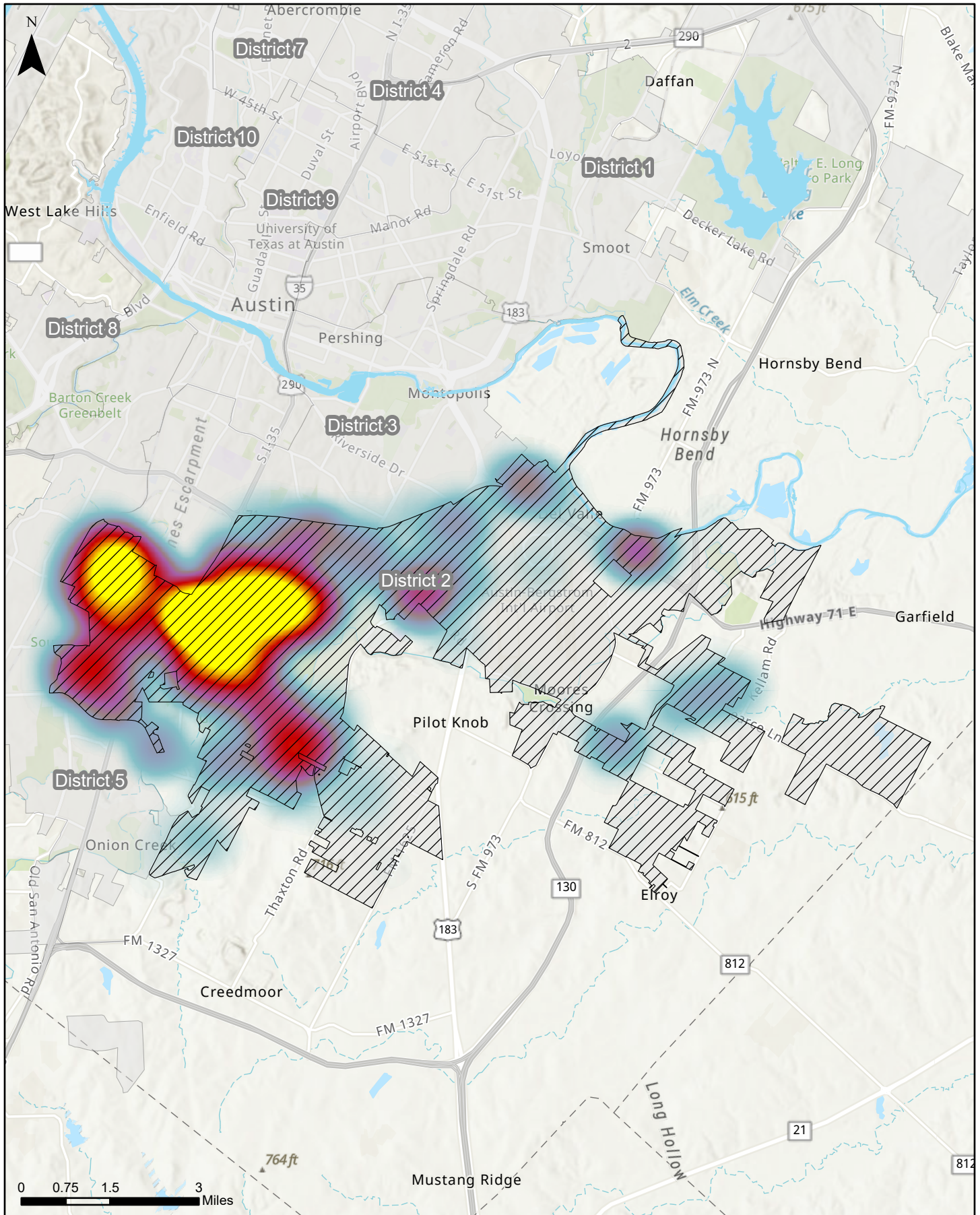
Operating License Complaint Cases by Zoning Designation



Operating License Complaint Case Types



Council District 2



This map examines the density of STR-related code cases opened in Council District 2 between October 1, 2020 and September 30, 2021. The total number of cases opened was 3103.

Sources: AMANDA Case Management Database; GIS DM 2021

 District Boundary
 Sparse
 Dense

AUSTIN **CODE**
DEPARTMENT
 Map generated on:
 1/5/2023